

## BEERS & CIDERS

### DRAUGHT

Half Pint

**ASAHI** 3.0 5.5

Japanese Premium Rice Lager, Clean, Crisp & Light.

**BROOKLYN LAGER** 5.2% ABV 3.0 5.5

Bold fruity lager with Caramel notes.

**BROOKLYN PILSNER** 4.6% ABV 3.0 5.5

Crisp, Bright & Refreshing.

**BROOKLYN DEFENDER IPA** 5.5% ABV 3.0 5.5

Packed with fruity, tropical & refreshing hops.

**BAD APPLE CIDER** 3.0 5.5

Sweet, spicy apples giving a crisp, dry finish.

### BOTTLES

**KIRIN ICHIBAN** 330ml 4.6% ABV 4.5

A premium, 100% malt beer brewed offering a smooth and rich flavor.

**TIGER BEER** 330ml 4.8% ABV 4.5

Clean, refreshing and full-bodied premium lager beer with no lingering aftertaste.

**OLD MOUT CIDER** 500ml 4.8% ABV 5.5

New Zealand's Finest Export, always mispronounced, never not enjoyed. Available in **Strawberry & Apple** or **Berries & Cherries**.

**SAN MIGUEL (ALCOHOL FREE)** 330ml 0% ABV 3.5

Hoppy flowers, grass and cereal notes.

## GINS

CHOOSE A SINGLE OR DOUBLE, PAIRED WITH ONE OF OUR FRANKLIN TONICS

Sgl Dbl

**ROKU** 7.0 8.5

Roku translates to 6, there are 6 botanicals perfectly crafted as only Japan knows how into this amazing gin.

**AVIATION** 8.0 9.5

"I've tried every Gin on the planet and Aviation is, hands down the best. Also, I don't recommend trying every Gin on the planet, stick with this one" – Ryan Reynolds.

**FORGED GIN CHERRY BLOSSOM** 7.5 9.0

Sweet Cherry & Crisp Tartness lead, followed by a buttery almond finish.

Sgl Dbl

**FORGED GIN SHERBET LEMON** 7.5 9.0

Remember eating Sherbet Lemons as a child? Welcome to the boozy version.

**BROCKMANS** 7.0 8.5

Sweet & delicious, better than any dry gin on the market.

**HENDRICKS** 7.0 8.5

Handcrafted gin with traditional botanicals, juniper, coriander, and citrus peel but the special infusion of cucumber and rose petals creates a unique and unexpected flavour.

**KURO PEACH** 9.0 10.5

A premium flavoured gin with a deliciously fruity Japanese-inspired twist.

## SOFT DRINKS

**COKE, COKE ZERO, DIET COKE, LEMONADE** Half 1.6 Pint 3.0

**TING** 330ml 2.5

A refreshing & zesty grapefruit soda.

**FANTA LEMON** 330ml 2.5

Sparkling Lemon Fruit Drink with Sugar and Sweeteners. Tongue tingling refreshing with a lemony zing and fruit juice.

**JUICES** 2.0

Orange, Apple, Cranberry or Pineapple.

**BOTTLED WATER** 330ml 2.0 750ml 3.9

Available in both Still & Sparkling.

**FRANKLIN & SONS RANGE** 200ml 2.0

Tonic, Slimline Tonic, Ginger Ale, Ginger Beer, Elderflower & Cucumber, Grapefruit & Bergamot, Mallorcan, Sicilian Lemonade.

# ROBATARY

ASIA x THE AMERICAS

# DRINK

## COCKTAILS

### CLASSICS

**SMOKED OLD FASHIONED** 9.0

Bourbon Whiskey, Angostura Bitters and Smoked Sugar Syrup. Served over ice cubes.

**WINTER SMASH** 8.5

Bursting with tropical fruity flavours. Mango Vodka, Passionfruit Liqueur, Mango Puree, Pineapple Juice & topped with Grenadine.

**CHERRY NOIR** 8.5

Sweet Cherry flavours as we combine Dark Cherry Liqueur, Cherry Blossom Gin, Orange Juice, Orgeat, Grenadine & Lemon.

**EASTERN MOJITO** 8.5

Because we wanted to make a Mojito even tastier! White Rum, Sugar, Lime Juice, & Fresh Mint, topped with Asahi Beer.

**RUMBLE IN THE JUNGLE** 8.5

Packing a fruity punch. Spiced Rum, Blue Curacao, Pineapple, Orange, Passionfruit & Lemon. Topped with Lemonade.

**TOKYO ICED TEA** 9.0

A vibrant pop of colour for this drink with a strong kick. Combining the classic Iced Tea ingredients with a touch of Melon Liqueur & Blue Curacao, topped with Lemonade.

**ESPRESSO MARTINI** 8.5

Vanilla vodka, coffee liqueur, espresso and sugar. Garnished with coffee beans.

**PASSIONFRUIT MARTINI** 8.5

Passionfruit Gin, Passionfruit Liqueur, Pineapple, Orange, Lime & Vanilla served with a shot of Prosecco.

**ASIAN GARDEN** 8.5

A fresh and lively combination of Roku Gin, Cherry Liqueur, Cranberry, Lemon, Orgeat & Grenadine.

**ASIAN DAISY** 7.5

Delicate & delightful. London Dry Gin, Lime Juice & Lychee Syrup.

### MOCKTAILS

**SHANGHAI TEMPLE** 4.5

Mixed Berries, Lime & Ginger Ale.

**LYCHEE NOJITO** 4.5

Lychee Syrup, Cranberry Juice, Lime, Mint & Lemonade.

**CHILLI MARGARITA** 4.5

Fresh Chillies, Lime Juice, Lemon Juice, Sugar.

## SIGNATURE COCKTAILS

**RIKYURU 43** 8.0

'Liqueur'

The perfect marriage of Vanilla and Spiced Rum. Liqueur 43, Spiced Rum, Vanilla Syrup and Apple Juice.

**ATTAKAI 'Warm'** 8.5

Served as a Martini with the delicate flavours of Vanilla Liqueur, Honey Infused Tequila, Orange juice & Lemon juice, combing for a warm finish.

**SHIOMI** Named after 8.0

the Japanese Mountain.

A delicious blend of Melon Liqueur, Cointreau, Lime Juice & Lemonade.

**AMAI 'Sweet'** 8.0

Packed with vibrant fruity flavours and a finish of Caramel. Choose from **Strawberry** or **Apple**.

**PASSIONFRUIT SUPPAI 'Sour'** 8.5

Passionfruit Gin, Amaretto, Lemon Juice, Passionfruit Puree & Cherry Brandy.

**BANIRA 'Vanilla'** 8.5

A refreshing drink with an Asian twist. Vanilla Vodka, Lime, Apple Juice, Lychee Syrup, Lemon Juice.

**MOMO MAI TAI** 8.5

'Peach'

Our take on the Classic Mai Tai. Peach Gin, Hibiscus Liqueur, Orange, Pineapple, Lime & Orgeat Syrup.

## WHITE WINE

### CINTILLA WHITE, PENINSULA DE SETUBAL

Peninsula de Setubal, Portugal 12% ABV

An intense, fruity aroma with a hint of peach and warming ginger.

### GRENADE BLANC, SAINT-GUILHEM-LE-DÉSERT, CAVES FONJOYA

Languedoc-Roussillon, France 13% ABV

A fresh white wine, with citrus flavours layered with aromatic herbal notes of thyme, rosemary and a hint of spice on the finish.

### PINOT GRIGIO, NOVITA, VENEZIE

Venezie, Italy 12% ABV

A fresh, clean & crisp Pinot Grigio with vibrant pear & citrus flavours.

### SAUVIGNON BLANC 'TUATARA BAY', MARLBOROUGH

Marlborough, New Zealand 13% ABV

A dry, crisp wine with classic Marlborough herbaceous flavours of gooseberry, celery salt and a zesty finish.

### PINOT BIANCO, ALTO ADIGE, TRAMIN

Alto Adige, Italy 13.5% ABV

Dry, crisp and refreshing with delicate fruit aromas of green apples, with a nutty complexity and hints of green leaves. The wine shows a beautiful balance between a bright acidity and a richness of texture.

### VIOGNIER 'DINDORI RESERVE', MAHARASHTRA, SULA VINEYARDS

Maharashtra, India 13% ABV

Exotic aromas of peach and lychee lead to a full-bodied palate. Rich and opulent, with vibrant tropical fruit flavours and a distinctive mid palate sweetness through to a long mineral finish.

175ml 250ml Btl

4.5 6.5 19.0

6.25 8.5 25.0

4.75 6.5 19.5

7.0 9.5 29.0

8.0 10.75 32.0

7.0 9.5 29.0

## RED WINE

### MERLOT, TIERRA ANTICA

Valle Central, Chile 13% ABV

Forest fruit aromas of juicy cherries, plums and blackberries with a hint of chocolate on the finish.

### GRENADE NOIR, SAINT-GUILHEM-LE-DÉSERT, CAVES FONJOYA

Languedoc-Roussillon, France 13% ABV

A smooth and fruity red wine with elegant notes of raspberry and blueberry layered with floral hints and delicate menthol notes. Fresh and juicy with wild red fruits, blueberry and a touch of pepper.

### SHIRAZ, FOUNDSTONE

South Eastern Australia 14.5% ABV

A big, bold shiraz offering generous notes of rich black fruits, coffee, vanilla and caramel along with toasty, sweet oak

### PINOT NOIR 'ORIGIN', MARLBOROUGH, SAINT CLAIR

Marlborough, New Zealand 13.5% ABV

Aromas of ripe red berries are interlaced with spice and blackcurrant bud. The palate is full and rich, with flavours of vibrant red berries, layered with warm, spiced fruit through to a silky finish.

### MALBEC, PIATTELLE VINEYARDS,

Cafayate, Argentina 14.5% ABV

An elegant and fruit driven malbec, with a fruity bouquet of blackberry and violet. Aromatic wild herbs & graphite give a long lingering finish to this wine.

### PRIMITIVO DI MANDURIA 'TALÒ', SAN MARZANO

Apulia, Italy 14% ABV

A rich and opulent wine with vibrant flavours of ripe cherries and plums combined with subtle overtones of cocoa and vanilla. Velvety and textured with brambly fruits on the palate and a warm finish, this packs a punch of flavour.

175ml 250ml Btl

5.5 7.5 21.5

6.25 8.5 25.0

5.5 7.5 22.5

8.75 11.5 35.0

7.5 10.0 30.0

7.5 10.0 30.0

## SPARKLING

125ml Btl

### PROSECCO, CANAL GRANDO

4.5 26.0

Veneto, Italy 11% ABV

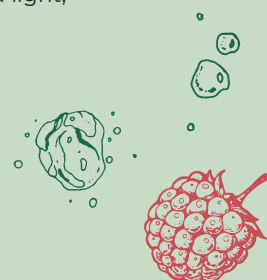
A bouquet of vibrant citrus fruits leads to a crisp and refreshing Prosecco with an irresistibly fruity finish.

### PROSECCO ROSÉ, SACCHETTO

4.75 27.5

Veneto, Italy 11% ABV

A blush pink sparkling Rosé with appealing floral aromas, strawberry fruits and light, soft bubbles.



## CHAMPAGNE

Btl

### COLLET BRUT NV, CHAMPAGNE

50.0

Champagne, France 12.5% ABV

Aromas of white flowers, lemon zest quince and white peach are combined with delicate hints of spice and anise. Refreshing yet complex with a wonderful fresh finish.

### COLLET BRUT ROSÉ NV, CHAMPAGNE

55.0

Champagne, France 12.5% ABV

Delicate aromas of mandarin, peach, mulberries and raspberries lead to a refreshing hit of rich fruit on the palate.

### VEUVE CLICQOUT YELLOW YELLOW LABEL NV, CHAMPAGNE

75.0

Champagne, France 12.5% ABV

A splendid smooth textured Champagne whose flavours evoke apricot, peach and vanilla pastries. Racy, with snappy acidity drives the flavours to a long, lingering finish.

## ROSÉ

175ml 250ml Btl

### ZINFANDEL, MISTY PEAK, CALIFORNIA

4.75 6.5 19.5

California, USA 10.5% ABV

Off dry in style, this Rosé offers flavours of watermelon, strawberry & white nectarine with a soft, silky finish

### PINOT GRIGIO BLUSH, VENEZIE, SACCHETTO

6.0 8.0 23.5

Veneto, Italy 12% ABV

The appealing pale blush colour of this wine is obtained from the skins of the Pinot Grigio grapes which are pink in colour. A fresh and fruity wine with a delicate flavour and an off-dry finish.

### 'CASUAL ROSÉ', NAVARRA, TANDEM

6.5 8.5 26.0

Navarra, Spain 14% ABV

Vibrant pink in colour, this richly aromatic Rosé has notes of wild red fruits layered with delicate floral and violet hints, leading to a fresh and lively palate.

